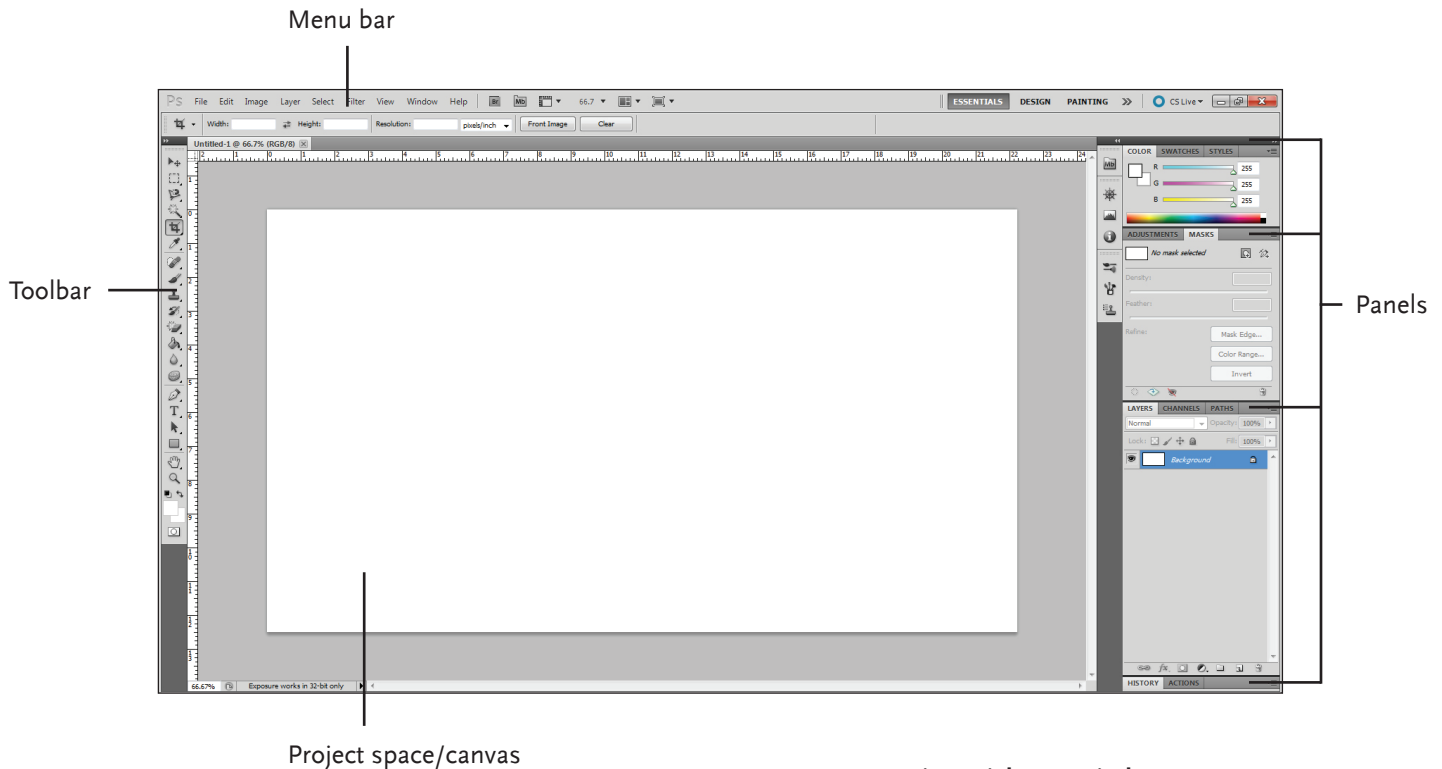


# Adobe Photoshop CS5 Quick Reference



## Starting a new project (Ctrl+N)

Click the “File” drop-down menu on the menu bar. The menu that opens up will have the “New...” option. The “New...” option gives the user the ability to name the project, set the width and height, resolution, color mode, and default background color.

## Opening a project (Ctrl+O)

Click the “File” drop-down menu on the menu bar. The menu that opens up will have the “Open...” option, which will allow the user to navigate to an existing project or image and open it in Photoshop.

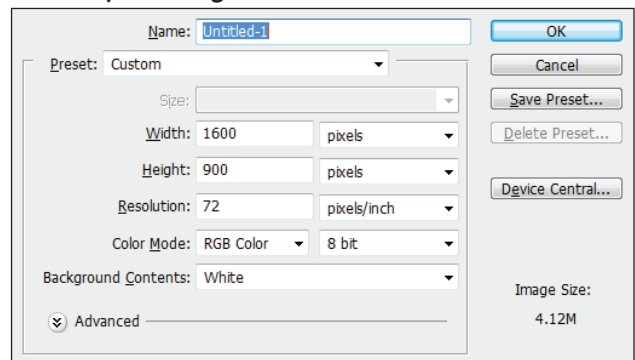
## Saving a project (Ctrl+S)

Click the “File” drop-down menu on the menu bar. The menu that opens up will have the “Save...” option, which will allow the user to save the project he/she is currently working on.

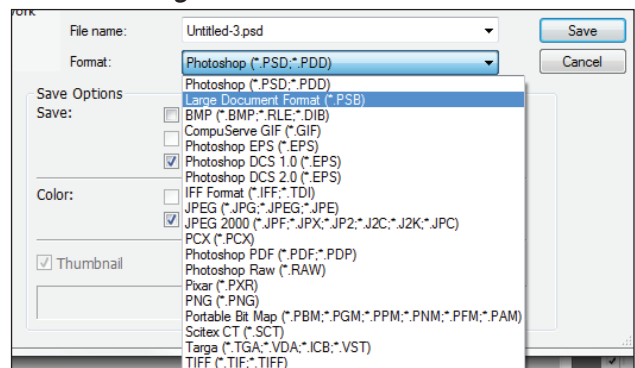
## Save as... (Shift+Ctrl+S)

Click the “File” drop-down menu on the menu bar. The menu that opens up will have the “Save As...” option, which allows the user to save a new, separate version of the project, and choose between a variety of image file formats, including \*.jpg, \*.png, \*.tiff, and \*.psd.

## New Project Dialogue Window



## Save File Dialogue Window



**Move Tool (V)**

Drags objects around the project canvas.

**Rectangular Marquee Tool (M)**

Select a rectangular pixel area.

**\*Elliptical Marquee Tool**

Select an elliptical pixel area.

**\*Single Row Marquee Tool**

Selects a horizontal row of pixels.

**\*Single Column Marquee Tool**

Selects a vertical row of pixels.

**Lasso Tool (L)**

Draw a freeform pixel area.

**\*Polygonal Lasso Tool**

Draw straight lines around selected area.

**\*Magnetic Lasso Tool**

Automatically sticks to edges of defined areas.

**Quick Selection Tool (W)**

Select a pixel area of similar coloring.

**\*Magic Wand Tool**

Select a pixel area of similar coloring.

**Crop Tool (C)**

Remove part of an image.

**\*Slice Tool**

Draw a slice area.

**\*Slice Select Tool**

Resize or relocate a slice.

**Eyedropper Tool (I)**

Click eyedropper cursor on the color you want to apply to the foreground.

**\*Color Sampler Tool**

Click the image and view color information in the info palette.

**\*Ruler Tool**

Calculates the distance between two points.

**\*Note Tool**

Adds an invisible note to your project canvas.

**Spot Healing Brush Tool (J)**

Corrects imperfections with pixels around the trouble spot.

**\*Healing Brush Tool**

Corrects imperfections with pixels around the trouble spot.

**\*Patch Tool**

Repair selected area with pixels from a different area.

**\*Red Eye Tool**

Repair red eye in selected area.

**Brush Tool (B)**

Draw soft brush strokes.

**\*Pencil Tool**

Draw hard-edged freeform shapes.

**\*Color Replacement Tool**

Paint over a targeted color with a new color.

**\*Mixer Brush Tool**

Combine colors on the brush, vary paint wetness across a stroke, or mix colors on canvas.

**Clone Stamp Tool (S)**

Clone areas of an image and apply them elsewhere.

**\*Pattern Stamp Tool**

Paint a predefined pattern, or create a custom pattern.

**History Brush Tool (Y)**

Paint from a previous history state or snapshot. Select the state or snapshot from the History palette.

**\*Art History Brush Tool**

Similar to the History brush, but with more options.

**Eraser Tool (E)**

Erases pixels to the background color layer.

**\*Background Eraser Tool**

Paints the background color or erases pixels.

**Magic Eraser Tool**

Converts the selected image area to transparency.

**Gradient Tool (G)**

Click and drag to fill with gradient of foreground and background colors.

**\*Paint Bucket Tool**

Click to fill with foreground color.

**Blur Tool**

Smooth defined edges.

**\*Sharpen Tool**

Focus soft edges.

**\*Smudge Tool**

Smear pixels.

**Dodge Tool (O)**

Lighten areas of the image.

**\*Burn Tool**

Darken areas of the image.

**\*Sponge Tool**

Decrease or increase pixel color.



## Pen Tool (P)

Click to add points to a path.

### \*Freeform Pen Tool

Draw a freeform path.

### \*Add Anchor Point Tool

Click on the path to insert an anchor point.

### \*Delete Anchor Point Tool

Click on an anchor point to delete it from the path.

### \*Convert Point Tool

Smooth a corner or sharpen a curve.



## Horizontal Type Tool (T)

Insert horizontal text into the image.

### \*Vertical Type Tool

Insert vertical text into the image.

### \*Horizontal Type Mask Tool

Create horizontal type-shaped selections.

### \*Vertical Type Mask Tool

Create vertical type-shaped selections.



## Path Selection Tool (A)

Selects vectors, subpaths, shapes.

### \*Direct Selection Tool

Click to add points to a path.



## Rectangle Tool (U)

Draw a rectangle filled with a foreground color.

### \*Rounded Rectangle Tool

Draw a rectangle with rounded corners.

### \*Ellipse Tool

Draw an oval shape.

### \*Polygon Tool

Draw a polygon shape.

### \*Line Tool

Draw a line.

### \*Custom Shape Tool

Create a shape or insert a predefined custom shape.



## Hand Tool

Click and drag to move around in the page.

### \*Rotate View Tool

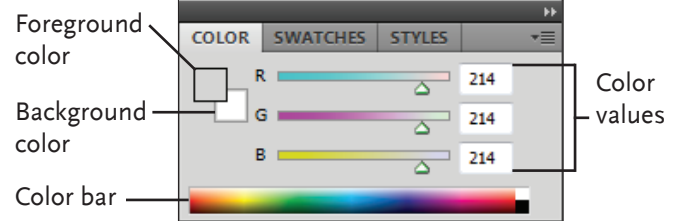
Non-destructively rotate the canvas.



## Zoom Tool (V) (Click to zoom in on an area, Alt+Click to zoom out)

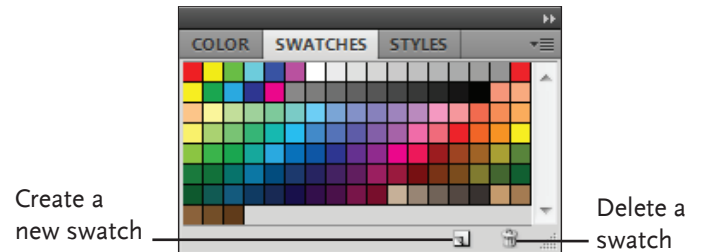
View the document close-up or far away.

## Color Palette



Create a new color, choose a different color model in the image, or modify a color.

## Swatches Palette



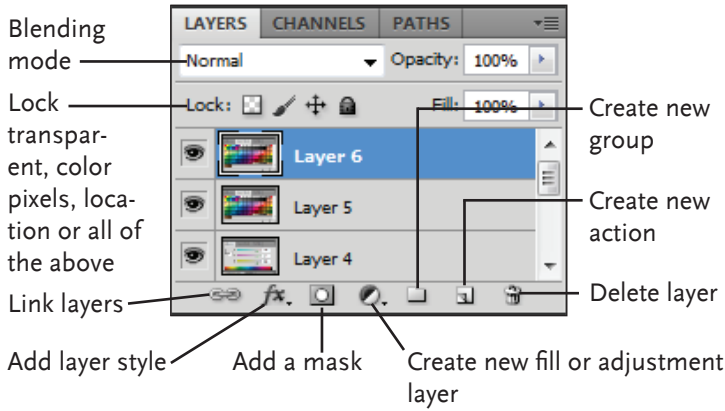
Create a new swatch, modify an existing swatch, or choose another color from the default color swatches.

## Styles Palette



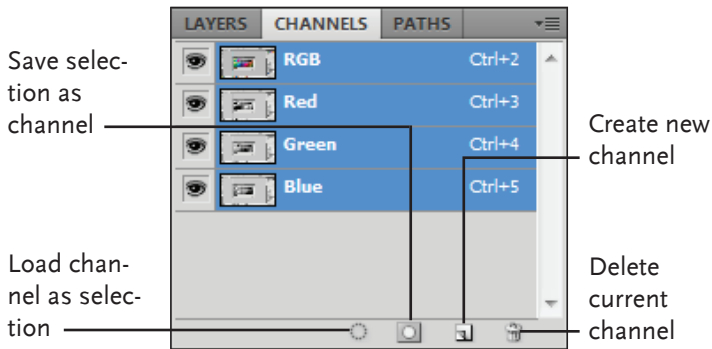
Fill a selected object with a predefined style, or apply styles using drawing tools.

## Layers Palette



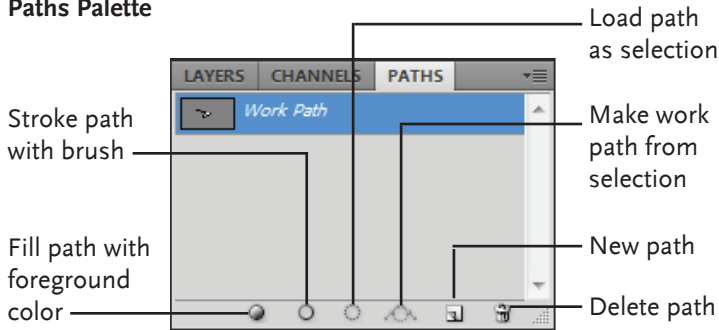
Add, delete or edit layers, or insert objects in layers. Use layers to stack objects on top of one another in an organized fashion.

## Channels Palette



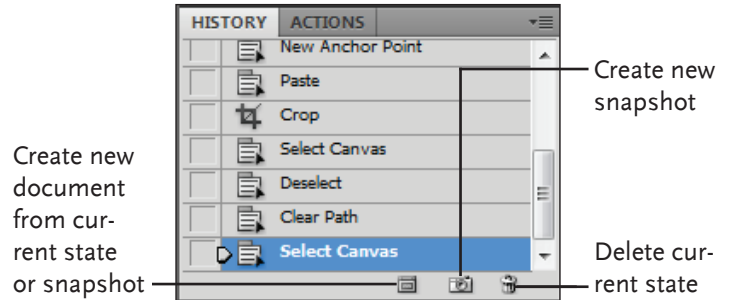
View individual color channels for the color model used in the image.

## Paths Palette



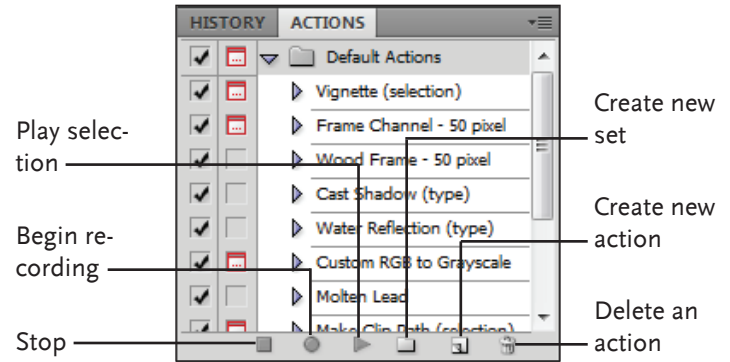
Each path in the image appears in this palette. Select a path to edit or view it in the project

## History Palette



Undo or redo actions, or create a new image from a previous state or snapshot.

## Actions Palette



Play a pre-defined action, create your own action, or edit or delete an action.